

The Rice Lake SURVIVOR® Truck Scale Advantages

(Steel)

RICE LAKE
WEIGHING SYSTEMS

To be the best by every measure™

800-472-6703

www.ricelake.com

m.ricelake.com



Stronger Weighbridges: Rice Lake truck scales typically have 25%-30% more structural steel content than competitive models. The SURVIVOR® OTR steel deck uses 5/16" checkered steel top plate, and (12) 12" wide flange 14lbs per foot beams on 11-1/2" centers beneath the deck on the 11' wide model. The beams are welded to the top plate and the 3/4" end section weldment assemblies.



Steel Preparation: All Rice Lake truck scales are steel shot blasted, cleaned with a hot cleaning solution, primed with a high solids urethane primer and finished with a coat of high solids urethane paint. All non-visible steel areas are coated with asphalt emulsified coating.



100,000 Lb CLC/DTA: Every OTR truck scale is rated up to 100,000lbs concentrated load capacity. Overloaded axles are the number one cause of premature weighbridge failure.



Open Bottom Weighbridge Design:

No bottom plate to trap moisture or hide broken or weak welds. Exposed surfaces beneath the deck are protected with a special formulated BASF Degacoat 310 coating. No other truck scale manufacturer provides this protection.



Boltless Top Access Covers: mean no lost, loose, or broken bolts to worry about. Access covers are form-fitted, pegged and weighted. Boltless access covers provide the service technician instant access to the load cell pocket, reducing service calls.

The Rice Lake SURVIVOR® Truck Scale Advantages

(Steel continued)

RICE LAKE
WEIGHING SYSTEMS

To be the best by every measure™

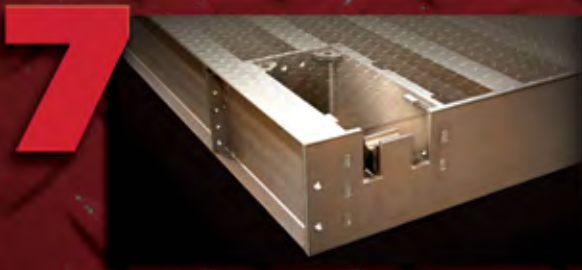
800-472-6703

www.ricelake.com

m.ricelake.com



Rock Guards: are welded to perimeter of scale for pit installations, and ends of scale for top of ground installations. Small rocks that can wedge between the head wall or side walls causing scale errors are eliminated.



Integrated Load Cell Pocket Design:

The load cell pocket is fabricated from 3/4" steel plate and is reinforced with laser cut mortise and tenon joints with welded WF beams on each side of the box. Most competitive end-boxes are flat welded to the end of the module and are fabricated from 1/2" or 5/8" material.

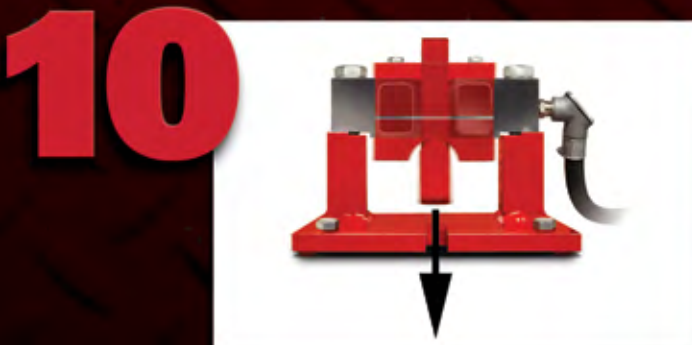


Span Deflection Ratio: The span deflection ratio for the OTR SURVIVOR® Truck Scale has been calculated at 1:1100 for steel deck under legal highway loading at mid span of module.



Rugged 75,000 lb Capacity Load Cells:

75K rigidly mounted shear beam load cells with single link suspension system. Load cells are manufactured from superior 4340 nickel plated alloy steel. Rocker column or compression load cells must be loaded vertically, and require end bumper bolts or plates to check the momentum of the bridge. The extraordinary design of the Rice Lake OTR eliminates the needs for bumper bolts.



G-Force™ mounting arrangement:

is self-checking and totally eliminates the need for check rods, or bumper bolts. All load cells are fitted with flex-conduit hub fittings to protect cables.

The Rice Lake SURVIVOR® Truck Scale Advantages

(Steel continued)

RICE LAKE
WEIGHING SYSTEMS

To be the best by every measure™

800-472-6703

www.ricelake.com

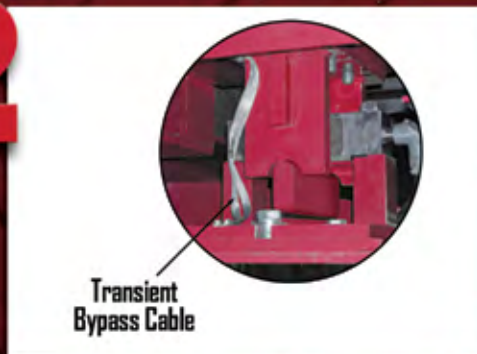
m.ricelake.com

11



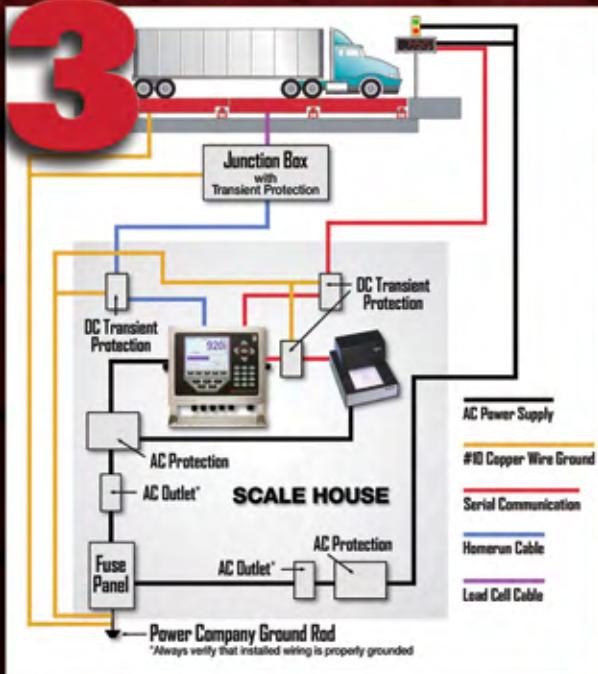
Rice Lake TuffSeal™: Fiberglass Reinforced Polyester (FRP) FRP Junction Box enclosure features a "Gore™" PreVent membrane that equalizes the inside and outside pressure. Water is repelled but a special hydrophobic (water-fearing) membrane continuously allows condensation to escape.

12



Wire Braided Copper Transient: By-pass cables at each load cell mount help route surges around the load cell to ground rather than through it. The number one cause of load cell failures are lightning strikes that travel through the weighbridge and load cells, damaging load cells.

13



Lightning Protection: Every Rice Lake Truck scale comes complete with a Surge Voltage Protection System that includes a UPS 2000 Sola Duplex Transformer. The junction box is provided with individual UJB-3T6 DC transient circuitry protection. The entire system is grounded to a single-point grounding system connected to the power ground. Our scales come with a Five-Year warranty on the load cells and junction box, and Five-Year warranty on the weighbridge.