

# StarLite

Family of Products

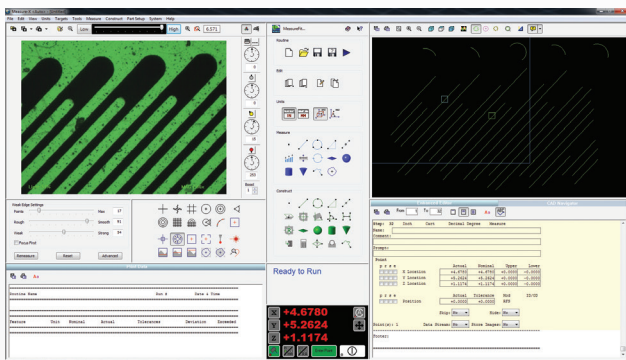
# Easy to Use Measurement Systems

## Automatic Measurements Made Simple

**QVI® StarLite** systems are the world's simplest precision measurement systems. StarLite combines versatile zoom optics with a digital color camera and easy to operate stages for the ultimate in simplicity. Fully automatic software guides the operator to position the stages to each measurement location.

### StarLite Systems Feature:

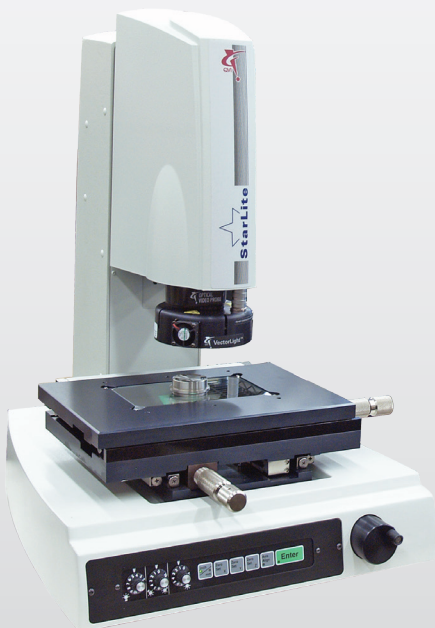
- Precision mechanical bearing stages with 1.0 micron scales
- Standard LED backlight, surface light and multi-sector ring light
- Full function Measure-X® - the world's most popular metrology software



Fully automatic QVI Measure-X software provides full geometric measurement functions.

## StarLite 150

**StarLite 150** is a compact, 3-axis semi-automatic measuring system that is reliable, accurate and easy to use. Built on a rigid cast metal base and column, StarLite 150 provides solid, repeatable performance, even in harsh shop conditions.

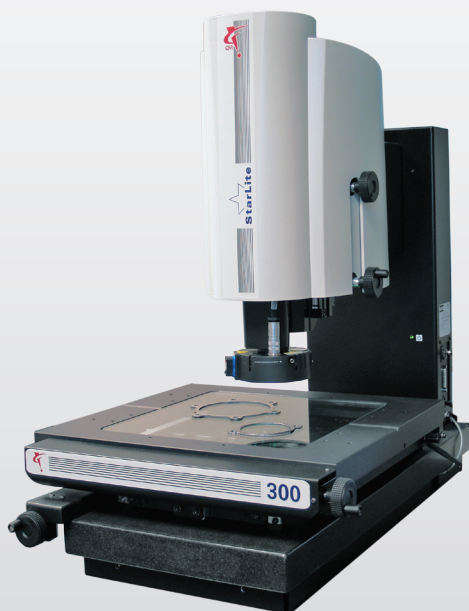


|  |       | Standard   | Optional  |
|--|-------|--|---|
| Stage Travel (X,Y,Z)   | Model |  |   |
|  | 150   | 150 x 75 x 125 mm  |   |
| Stage Drive System   |       | Precision compound X,Y stage with manual coarse and fine adjustment knobs; Manual Z-axis with fine adjustment hand wheel |   |
| Imaging Optics   |       | Motorized 6.5:1 zoom lens system   | Optional add-on lenses: 0.5X, 0.75X, 1.5X and 2.0X  |
| Field of View  |       | Low Magnification: 9.1 mm (diagonal)<br>High Magnification: 0.6 mm (diagonal)*   |   |
| Metrology Camera   |       | Digital megapixel color camera   |   |
| Illumination   |       | All LED illumination, including backlight and VectorLight™ programmable 8-sector ring light                              | Full LED VectorLight with integral square-on surface light and 6-ring, 8-sector oblique light |
| *Field of view size at high optical / high digital magnification |       |  |   |

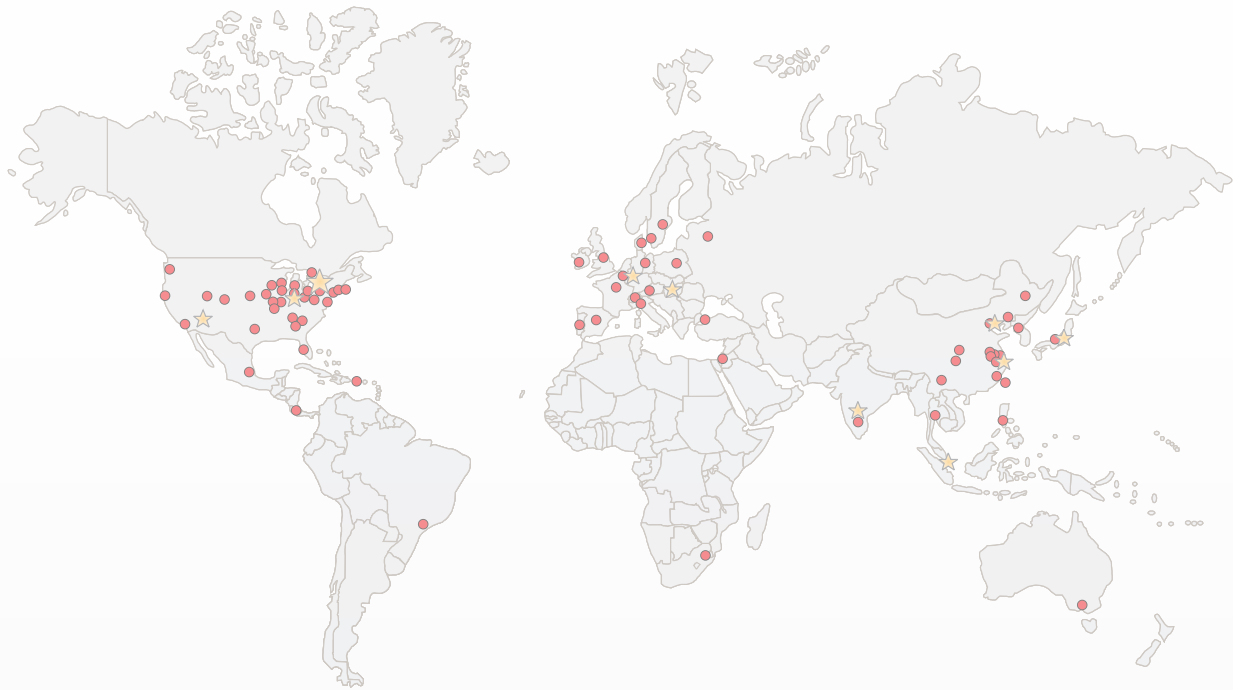


## StarLite 200/250/300

StarLite 200/250/300 models take semi-automatic performance to the next level with solid granite bases for rigid, stable 3-axis measuring capability. Precision ball-slide stages with ergonomic controls make operation easy.



|  |       | Standard   | Optional  |
|--|-------|--|---|
| Stage Travel (X,Y,Z)   | Model |  |   |
|  | 200   | 200 x 150 x 150 mm   |   |
|  | 250   | 300 x 150 x 150 mm   |   |
|  | 300   | 300 x 300 x 150 mm   |   |
| Stage Drive System   |       | Precision compound X,Y stage with manual Z-axis focus motion with coarse and fine adjustment knobs |   |
| Imaging Optics   |       | Motorized 6.5:1 zoom lens system   | Optional add-on lenses: 0.5X, 0.75X, 1.5X and 2.0X  |
| Field of View  |       | Low Magnification: 9.1 mm (diagonal)<br>High Magnification: 0.6 mm (diagonal)*                     |   |
| Metrology Camera   |       | Digital megapixel color camera   |   |
| Illumination   |       | All LED illumination, including backlight and VectorLight™ programmable 8-sector ring light        | Full LED VectorLight with integral square-on surface light and 6-ring, 8-sector oblique light |
| *Field of view size at high optical / high digital magnification |       |  |   |



## QUALITY VISION INTERNATIONAL – Precision for People®

Quality Vision International (QVI®) is the world's largest vision metrology company. Founded in 1945, QVI is the world leader in optical, electronic and software technologies for vision and multisensor measuring systems.

Precision for People is more than just our slogan. It's our commitment to delivering our worldwide customers precision metrology systems, designed with the people who use them in mind. Precision for People - it's what we stand for.

