

QVI® StarLite™ 200|250|300

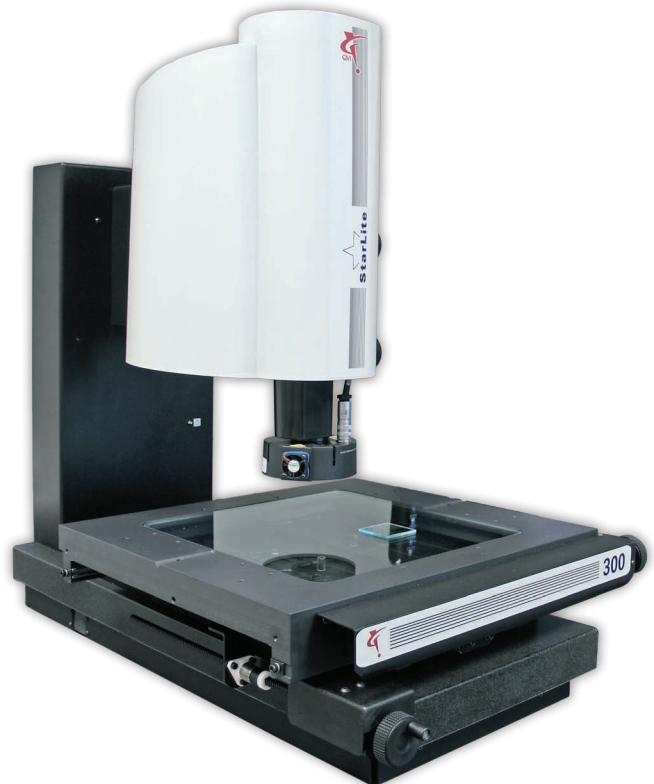
Benchtop Measuring Machines

RAM

StarLite 200, 250, 300 models offer high performance on the workbench. StarLite systems feature reliable motorized zoom optics and high resolution digital cameras to provide the accuracy you expect from RAM.

- 3-axis (X,Y,Z) measurement capability with optional motorized autofocus
- Digital megapixel color camera coupled with a motorized zoom lens
- LED backlight and VectorLight™ programmable LED ring light with 6 rings and 8 sectors

StarLite Measuring Ranges (mm)				
Models		X	Y	Z
	200	200	150	150
	250	300	150	150
	300	300	300	150



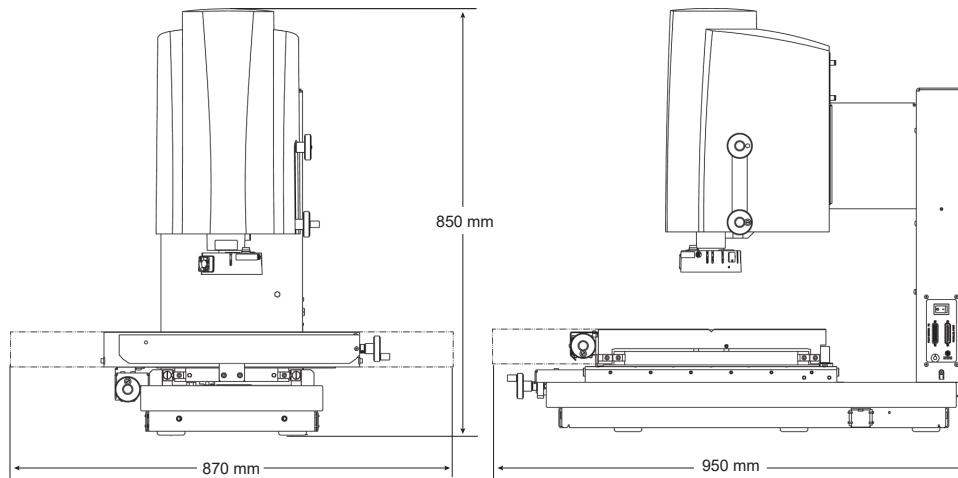
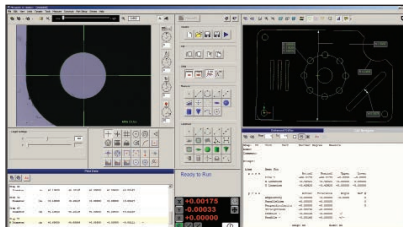
StarLite 300 model shown



QVI® StarLite™ 200|250|300

Measurement Software

Measure-X® is the world's most popular metrology software. Measure-X makes it easy for QVI StarLite to accurately measure fine features that require multi-step measurement routines. All measurements are fully automatic. Measure-X guides the user to position each feature using the manual stage controls.



StarLite 300 Model Shown

System Weight:
 200 Model - 120 kg
 250 Model - 120 kg
 300 Model - 160 kg

		Standard	Optional
X, Y, Z Travel	200	200 x 150 x 150 mm	
	250	300 x 150 x 150 mm	
	300	300 x 300 x 150 mm	
X, Y, Z Scale Resolution		1.0 µm	
Stage Drive System		Precision compound stage with manual fine adjustment knobs	Motorized Z axis with rotary control knob and programmable positioning
Max Recommended Stage Load		23 kg	
Working Distance		62 mm (with standard VectorLight™)	
Imaging Optics		6.5:1, 10 position motorized zoom lens	
Lens Attachments			0.5X, 0.75X, 1.5X, 2.0X
Metrology Camera		QVI Digital, Megapixel Color Metrology Camera	
Field of View <small>*Highest available magnification</small>		Low Mag 9.1 mm diagonal	High Mag* 0.6 mm diagonal
Magnification on 24" LCD Monitor		24x to 370x on-screen digital/optical magnification standard with full feature Measure-X layout	12x to 740x on-screen digital/optical magnification with optional add-on lenses and dual monitor user interface
Illumination		LED VectorLight™ programmable ring light with 6 rings and 8 sectors LED backlight	Option 1: LED VectorLight™ SP programmable ring light with 6 rings and 7 sectors, LED backlight, LED square-on surface light Option 2: LED VectorLight™ SF programmable ring light with 6 rings and 8 sectors, LED backlight, LED square-on surface light (reduced working clearance)
Controller <small>*Controller configuration subject to change without notice.</small>		QVI standard system controller with networking and communication ports*	
Software		Measure-X	MeasureFit®, SmartReport®, CAD interface, SmartFeature® software for FDA compliant environments
Miscellaneous Options			Optical accessory kit, manual rotary indexer, NIST traceable calibration artifact, footswitch, dust cover
Rated Environment		Temperature 18-22° C, stable to ±1° C; 30-80% humidity; vibration <0.001g below 15 Hz	
Power		100-120 VAC or 200-240 VAC, 50/60 Hz, 1 phase, 250W	
X,Y Linear Accuracy ^{1,2,3,4,5,6}		E _x : (2.5 + 6L/1000) µm (All Models)	
XY Area Accuracy ^{1,2,3,4,5,6}		E _y : (3.5 + 6L/1000) µm (200, 250 Models) E _z : (4.5 + 6L/1000) µm (300 Model)	
Z Linear Accuracy ^{1,2,3,4,5,6}		E _z : (7.0 + 8L/1000) µm	E _x : (5.0 + 8L/1000) µm (requires motorized Z-axis option)
Notes		1. Where L = Measurement length in mm. 2. With evenly distributed 5 kg load in the standard measuring plane. Depending on load distribution, accuracy at maximum recommended load may be less than standard accuracy. 3. All optical accuracy specifications at maximum optical magnification at 1:1 digital pixel resolution. 4. All specifications apply to a thermally stable system operated in the rated environment. 5. Maximum rate of temperature change: 1° C per hour. 6. Calibration artifacts are described in QVI publication number 790762.	



Quality Vision International, Inc.
 Phone: +1 585 758 1300
 Fax: +1 585 506 4307
 raminfo@qvii.com
 www.qvii.com/ram

