



QVI® SNAP™ 100

SNAP measures complex parts instantly without programming. Simply place the part on the stage and press the GO button.

- Telecentric optics ensure accurate part measurements in shop conditions
- AutoID recognizes any known part in the field of view
- Automatically find and measure any unknown parts in the field of view
- Exclusive Zoom Anywhere™ technology lets you zoom in to measure details anywhere in the viewing area
- SNAP 100 enables fast measurement without fixturing, regardless of part orientation

Benchtop Digital Measuring Machine

RAM



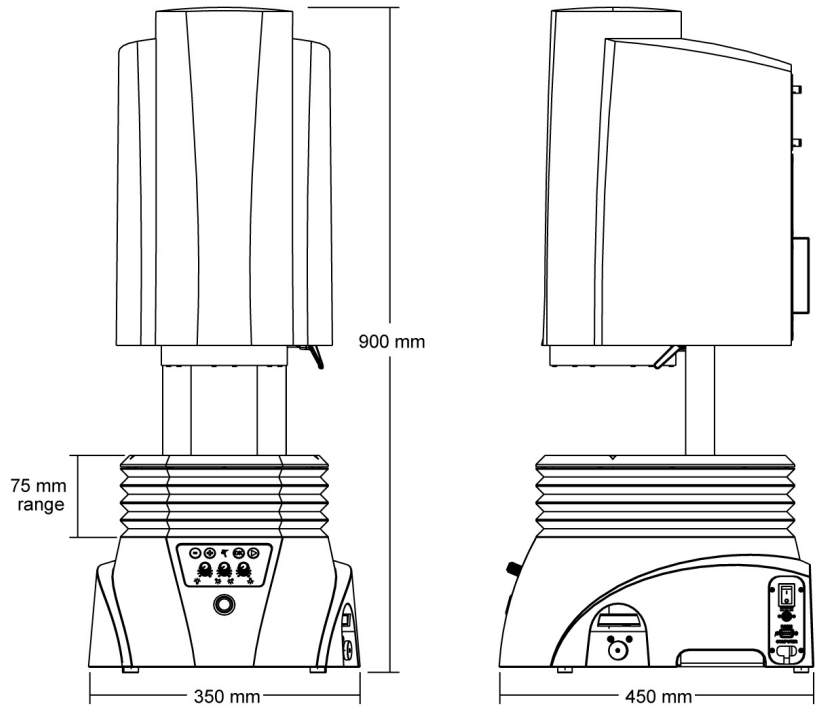
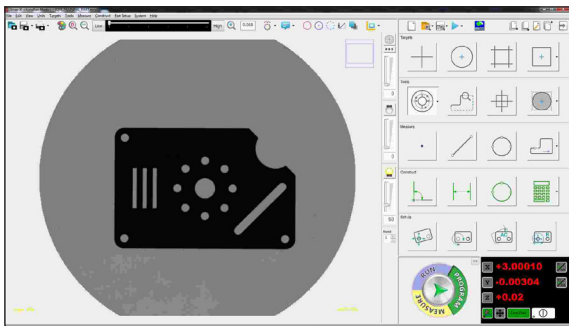
Measurements Made Simple

SNAP provides a full range of feature measurements with an unlimited number of points - with or without a pre-programmed routine. AutoID and FeatureExtractor[™] allow SNAP to accurately identify, orient and measure any part in its field of view.

Choose the mode for your task:

- Run - for pre-programmed routines
- Measure - to automatically measure any part
- Program - to set up a part routine

To measure, just place the part on the stage and press ▶



System Weight: 43.5 kg

	Standard	Optional
Measuring Unit	Rigid, cast aluminum base and nickel plated worktable, 75 mm manual vertical position adjustment and stage lock 10 kg load capacity, evenly distributed	
Worktable	Manual Z-position adjustment with position feedback for repeatable worktable positioning	Motorized Z-position adjustment with autofocus (with optional dual magnification optics) Rotary Indexer
Optics	Telecentric, single optical magnification	Telecentric, dual optical magnification with 4X optical high magnification
Metrology Camera	QVI High Density Megapixel Metrology Camera	QVI Large Field Megapixel Metrology Camera
Maximum Field of View (diagonal)	<i>Single Mag / High Density Camera:</i> 78 mm	<i>Single Mag / Large Field Camera:</i> 100 mm <i>Dual Mag / High Density Camera:</i> Low Mag 78 mm, High Mag 19.5 mm <i>Dual Mag / Large Field Camera:</i> Low Mag 100 mm, High Mag 24.5 mm
Digital Zoom Range	<i>Single Mag / High Density Camera:</i> 4:1 total zoom range	<i>Single Mag / Large Field Camera:</i> 3:1 total zoom range <i>Dual Mag / High Density Camera:</i> 16:1 total zoom range <i>Dual Mag / Large Field Camera:</i> 12:1 total zoom range
Depth of Field	<i>Single Mag / High Density Camera:</i> 12 mm	<i>Single Mag / Large Field Camera:</i> 50 mm <i>Dual Mag / High Density Camera:</i> Low Mag 20 mm, High Mag 5 mm <i>Dual Mag / Large Field Camera:</i> Low Mag 50 mm, High Mag 10 mm
Illumination	All LED, green substage profile light, programmable 8-sector green ring light	LED green coaxial surface light
Image Processing	SNAP advanced image analysis, 256 level grayscale, with 10:1 - 50:1 sub-pixel resolution	
Controls	GO button, illumination & magnification controls	Stage controls for optional motorized Z axis
System Controller <small>*Controller configuration subject to change without notice.</small>	SNAP standard system controller with networking and communication ports*	Single flat panel LCD monitor, or dual flat panel LCD monitors; keyboard, mouse
Miscellaneous Options		Barcode reader, USB digital I/O capability, dust cover, fixture kit, peripheral support frame, calibration artifact
Rated Environment	Temperature 18-22° C, stable to ±1° C; 30-80% humidity; vibration <0.001g below 15 Hz	
Power	100-120 VAC or 200-240 VAC, 50/60 Hz, 1 phase, 160W	
Accuracy (E₂)^{1,2,3}	Single Magnification Optics	Dual Magnification Optics / Low Mag
	5 μm	10 μm
		Dual Magnification Optics / High Mag
		5 μm

1. All specifications apply to a thermally stable system operated in the rated environment. | 2. Applies to the highest digital zoom level for each optical magnification over the full range of X,Y travel. | 3. QVI calibration artifact P/N 640133 or 640685 for high density camera; 640554 for optional large field camera. Calibration artifacts are described in QVI publication number 790762.



Quality Vision International, Inc.
 Phone: +1 585 758 1300
 Fax: +1 585 506 4307
 raminfo@qvii.com
 www.qvii.com/ram

