



We partner with you to provide **HIGH QUALITY,**
CONSISTENT AND DELICIOUS PRODUCTS
that will satisfy customers and give you the **COMPETITIVE EDGE**

J.A. King understands that the pressures being placed on food and beverage producers are greater than ever. We can help you to achieve optimal productivity and yield while maintaining regulatory compliance and quality standards.



SERVICES

ISO 17025 CALIBRATION

- One of the broadest scopes in the industry.
- Onsite calibration available for immediate turn around.
- Ensure your measurement equipment is accurate as possible.
- Data you need to be “audit ready” at all times.
- Parameters including, weight, pH, temperature/humidity, pressure, metal detection and more.

24 HOUR TECHNICAL SUPPORT AND REPAIR

- GPS technician dispatching.
- Highly trained technicians quickly identify the problem and begin repairs, minimizing downtime.

QA/QC AUDITING

- Audit processes and products to provide comprehensive data analysis which help control your critical processes.





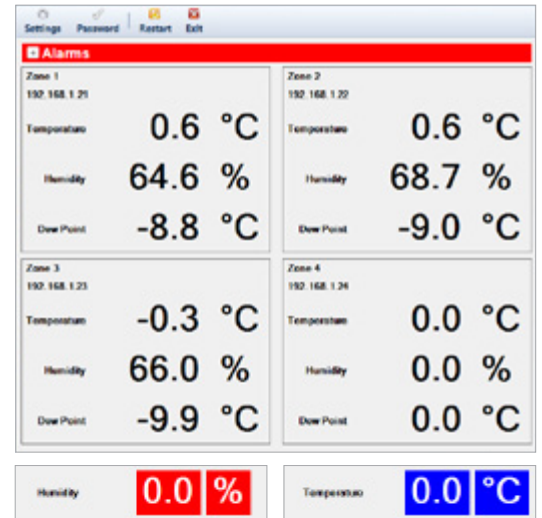
ENGINEERING

OUR ENGINEERS DESIGN, BUILD AND IMPLEMENT EASY-TO-USE SOLUTIONS FOR YOUR COMPLEX MEASUREMENT APPLICATIONS.

- Process automation expertise enables you to reduce raw material consumption, improve production efficiency and achieve consistency in your products.
- We create flexible solutions either completely from scratch or adapted from current hardware/software.
- Our custom software lets you maximize data collection and reporting.

PAST PROJECTS INCLUDE:

- Customized extruders for national donut chain.
- Temperature/humidity monitoring system for Italian ice producer.
- In-line weighing and labeling.



PRODUCTS

We offer a full line of robust and accurate measurement equipment. Our products help you monitor production, meet safety standards, provide traceability and minimize waste.

POPULAR PRODUCT OFFERINGS INCLUDE:



SCALES



TEMPERATURE AND HUMIDITY DEVICES



METAL DETECTORS



pH INSTRUMENTS



PRESSURE DEVICES



PRINTERS AND SCANNERS