

## QVI® SNAP™ DM350

### Large Area Digital Measuring Machine

# RAM

SNAP DM350 extends large field of view convenience to large parts such as circuit boards, sheet metal panels and artwork.

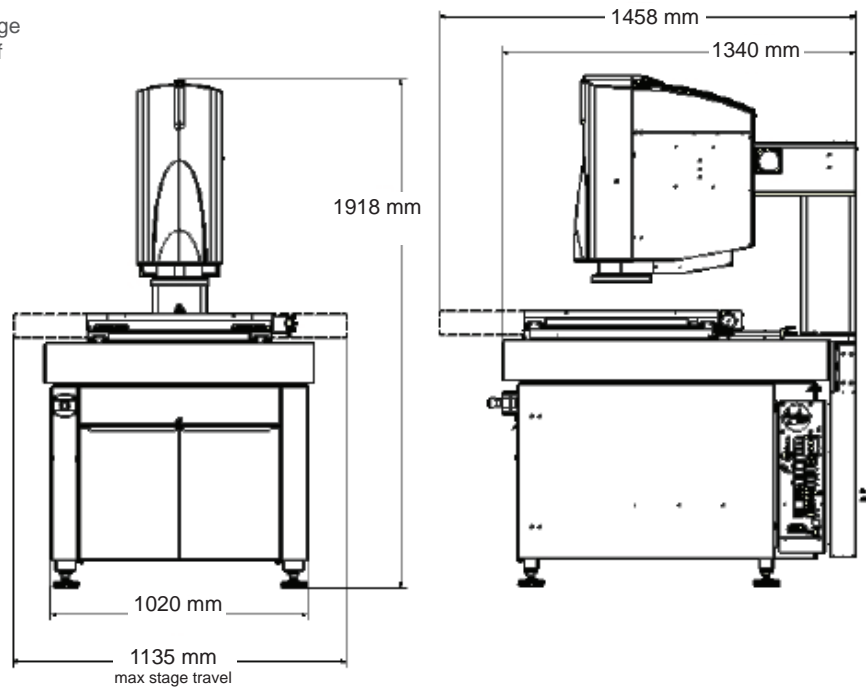
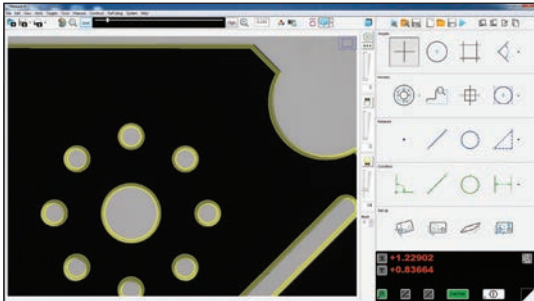
- 350 x 350 x 150 mm stage travel for large volume parts
- Two optical magnifications provide high resolution for small feature size measurement
- AutoID recognizes and measures all parts within its measuring area - even multiple different parts
- Zoom Anywhere™ technology lets you zoom in to measure fine details anywhere in the field of view
- 150 mm Z-axis travel and long working distance allow ample room for large parts and fixturing
- Automatic focus with SNAP-X integrated software
- Optional touch probe for high accuracy Z-axis measurements



## Measurement Software

SNAP-X<sup>™</sup> measurement software provides a full range of feature measurements with an unlimited number of points and measurement steps in a routine.

SNAP automatically identifies the part and its orientation, eliminating the need for manual setup. Programming is simple too. Work from a CAD file, sample part, or simply walk up and measure.



System Weight: 1050 kg

	Standard	Optional
<b>Measuring Unit</b>	Rugged steel frame and column with granite surface plate	
<b>Maximum Measuring Range (X,Y,Z)</b>	450 x 450 x 150 mm	
<b>Stage</b>	Precision motorized compound X,Y stage and precision Z-axis stage with DC servo drives 350 x 350 x 150 mm travel range	
<b>Optics</b>	Fully telecentric, dual magnification, with automatic focus; calibration artifact included	
<b>Max Recommended Stage Load</b>	30 kg	
<b>Z-axis Autofocus Resolution</b>	0.1 mm	
<b>Field of View (mm)</b>	Low Mag: 100 mm diameter High Mag: 24.5 mm diameter	Low Mag: 78 mm diameter High Mag: 19.5 mm diameter
<b>Depth of Field (mm)</b>	Low Mag: 50 mm High Mag: 10 mm	Low Mag: 40 mm High Mag: 5 mm
<b>Illumination</b>	All LED, substage profile light, coaxial surface light, programmable 8 sector ring light	
<b>Camera</b>	QVI Large Field Megapixel Metrology Camera	QVI High Density Megapixel Metrology Camera
<b>Image Processing</b>	SNAP advanced image analysis, 256 level grayscale, with 10:1 - 50:1 sub-pixel resolution	
<b>Controls Unit</b>	Multi-function hand controller with 3-axis joystick and lighting controls	
<b>System Controller</b> <small>*Controller configuration subject to change without notice.</small>	QVI standard system controller with networking and communication ports*	Single flat panel LCD monitor, or dual flat panel LCD monitors; keyboard, mouse
<b>Rated Environment</b>	20 ± 1° C (rated), 15-30° C (max. operating range)	
<b>Power</b>	120 / 240 VAC, 50/60 HZ, 1-phase, 750W	
<b>XY Accuracy* (E<sub>2</sub>)</b>	(3.0 + 8L/1000) µm	
<b>Z Accuracy (E<sub>1</sub>)</b>		(5.0 + 6L/1000) µm (with optional touch probe)
<small>* Where L = measuring length in mm. Applies to the entire field of view at the highest optical magnification and highest digital zoom level over the full range of X,Y travel. QVI calibration artifacts 638696 for standard camera and 640685 for optional high density camera, and 623850 for stage calibration. Calibration artifacts must be positioned in the standard measuring plane, defined as perpendicular to the optical axis within 0.5 mm, and within 5 mm of best focus. Weight not to exceed 5 kg evenly distributed on the worktable. Applies to a thermally stable system operating within the rated environment.</small>		



**Quality Vision International, Inc.**

Phone: +1 585 758 1300

Fax: +1 585 506 4307

raminfo@qvii.com

www.qvii.com/ram

# RAM